



SURVEYOR'S OFFICE

# Hamilton County

*Kenton C. Ward, Surveyor*  
Phone (317) 776-8495  
Fax (317) 776-9628

*Suite 188*  
*One Hamilton County Square*  
*Noblesville, Indiana 46060-2230*

December 5, 2005

To: Hamilton County Drainage Board

Re: Fred Hines Drain, Summit Lakes Section 2 Arm

Attached is a petition filed by Arbor Investments, LLC, along with a non-enforcement request, plans, calculations, quantity summary and assessment roll for the Summit Lakes Section 2 Arm, Fred Hines Drain to be located in Washington & Noblesville Township. I have reviewed the submittals and petition and have found each to be in proper form.

I have made a personal inspection of the land described in the petition. Upon doing so, I believe that the drain is practicable, will improve the public health, benefit a public highway, and be of public utility and that the costs, damages and expenses of the proposed drain will probably be less than the benefits accruing to the owners of land likely to be benefited. The drain will consist of the following:

27" RCP      101 ft.

The total length of the drain will be 101 feet.

This drain will become an arm to the Fred Hines Drain, Arm 6, which is being reconstructed with Slater Farms of Noblesville by Precedent Development. Arm 6 will begin at the end of this drain and continue thru Slater Farms to the main Fred Hines Drain.

The retention pond #1 located in Common Area #1 is not to be considered part of the regulated drain. Only the outlet will be maintained as part of the regulated drain. The maintenance of the pond will be the responsibility of the Homeowners Association and the Town of Westfield. The Board will however retain jurisdiction for ensuring the storage volume for which the lake was designed will be retained, thereby, allowing no fill or easement encroachments. The internal storm sewer system of Summit Lakes, Section 2 will be maintained by the Town of Westfield.

I have reviewed the plans and believe the drain will benefit the subdivision. I also believe that no damages will result to landowners by the construction of this drain. I recommend the maintenance assessments for the drain be changed as follows:

1. Maintenance assessment for roads and streets be increased from \$1.00 per acre to \$10.00 per acre.

This will increase the total assessment drain by \$732.76.

The petitioner has submitted surety for the proposed drain at this time. The sureties which are in the form of a Performance Bond are as follows:

Agent: Insurance Company of the West  
Date: July 1, 2005  
Number: 2168185  
For: Storm Sewer  
Amount: \$12,143.40

Parcels assessed for this drain will also be assessed for the Kirkendall Drain at sometime in the future.

I believe this proposed drain meets the requirements for Urban Drain Classification as set out in IC 36-9-27-67 to 69. Therefore, this drain shall be designated as an Urban Drain.

I recommend that upon approval of the above proposed drain that the Board also approve the attached non-enforcement request. This request is for the reduction of the regulated drain easement to those easement widths as shown on the secondary plat for Summit Lakes Section 2 as recorded in the office of the Hamilton County Recorder.

I recommend the Board set a hearing for this proposed drain for April 24, 2006.



Kenton C. Ward  
Hamilton County Surveyor

KCW/pll

To: Hamilton County Drainage Board

Date: June 27, 2005

Re: Fred Hines Drain

Arbor Investments, LLC (Here-in-after "Petitioner"),


hereby petitions the Hamilton County Drainage Board under IC 36-9-27-66 for an arm to be installed to the Fred Hines Drain in order to serve the property of the

petitioner. The petitioner, in support of said petition, advises the Board that:

1. The Fred Hines Drain is presently on a maintenance program and that land of the petitioner is assessed as benefited by the maintenance of the regulated drain
2. There is no known adequate open or tiled drain connecting the land of the petitioner with the regulated drain;
3. The waters from the petitioners land flow over or through land owned by others to reach the regulated drain;
4. The legal description of lands through which the new regulated drain will run along with the parcel numbers, name and address of each owner of that land is shown on Exhibit "A" which is attached;
5. The general route of the proposed new regulated drain and method of construction is shown on Exhibit "B" which is attached.
6. Petitioner agrees to pay all legal and construction costs involved with the construction of the proposed new regulated drain.

Signed

Printed

  
 \_\_\_\_\_  
 \_\_\_\_\_  
 \_\_\_\_\_  
 \_\_\_\_\_

Michael K. Terry  
 \_\_\_\_\_  
 \_\_\_\_\_  
 \_\_\_\_\_  
 \_\_\_\_\_

FILED

JUL 27 2005

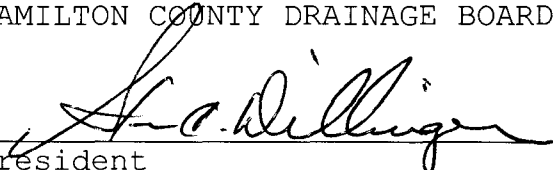
OFFICE OF HAMILTON COUNTY SURVEYOR

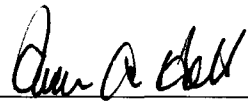
**FINDINGS AND ORDER**  
**CONCERNING THE MAINTENANCE OF THE**  
**Fred Hines Drain, Summit Lakes Section 2 Arm**

On this **24th day of April 2006**, the Hamilton County Drainage Board has held a hearing on the Maintenance Report and Schedule of Assessments of the **Fred Hines Drain, Summit Lakes Section 2 Arm**.

Evidence has been heard. Objections were presented and considered. The Board then adopted the original/amended Schedule of Assessments. The Board now finds that the annual maintenance assessment will be less than the benefits to the landowners and issues this order declaring that this Maintenance Fund be established.

HAMILTON COUNTY DRAINAGE BOARD

  
\_\_\_\_\_  
President

  
\_\_\_\_\_  
Member

\_\_\_\_\_  
Member

Attest: 

CERTIFICATE OF COMPLETION AND COMPLIANCE

To: Hamilton County Surveyor

Re: SUMMIT LAKES, SECTION 2  
SCHNEIDER CORP. JOB NO. 4632.002

I hereby certify that:

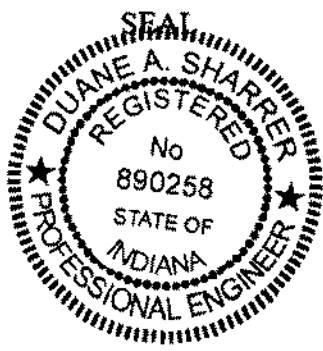
1. I am a Registered Land Surveyor or Engineer in the State of Indiana.
2. I am familiar with the plans and specifications for the above referenced subdivision.
3. I have personally observed and supervised the completion of the drainage facilities for the above referenced subdivision.
4. The drainage facilities within the above referenced subdivision to the best of my knowledge, information and belief have been installed and completed in conformity with all plans and specifications.
5. The drainage facilities within the above referenced subdivision to the best of my knowledge, information and belief have been correctly represented on the Record Drawings, Digital Record Drawings and the Structure Data Spreadsheet.

Signature: Duane A. Sharrer Date: 10/19/06

Type or Print Name: DUANE A. SHARRER

Business Address: 8901 OTTIS AVENUE  
INDIANAPOLIS, IN 46216

Telephone Number: (317) 826-7302



INDIANA REGISTRATION NUMBER  
890258



1262

SURVEYOR'S OFFICE  
**Hamilton County**

*Kenton C. Ward, CFM*  
Surveyor of Hamilton County  
Phone (317) 776-8495  
Fax (317) 776-9628

Suite 188  
One Hamilton County Square  
Noblesville, Indiana 46060-2230

**To: Hamilton County Drainage Board**

**April 24, 2006**

**Re: Fred Hines Drain: Summit Lakes Sec. 2 Arm**

Attached are as-builts, certificate of completion & compliance, and other information for Summit Lakes Section 2. An inspection of the drainage facilities for this section has been made and the facilities were found to be complete and acceptable.

During construction, changes were made to the drain, which will alter the plans submitted with my report for this drain-dated December 5, 2005. The report was approved by the Board at the hearing held April 24, 2006. (See Drainage Board Minutes Book 9, Pages 172-174)

The changes are as follows:

There is now 21' of 27" RCP and 75' of 27" PVC.

The length of the drain due to the changes described above is now **96 feet**.

The non-enforcement was approved by the Board at its meeting on April 24, 2006 and recorded under instrument #200600065692.

The following sureties were guaranteed by Insurance Company of the West and released by the Board on its June 12, 2006 meeting.

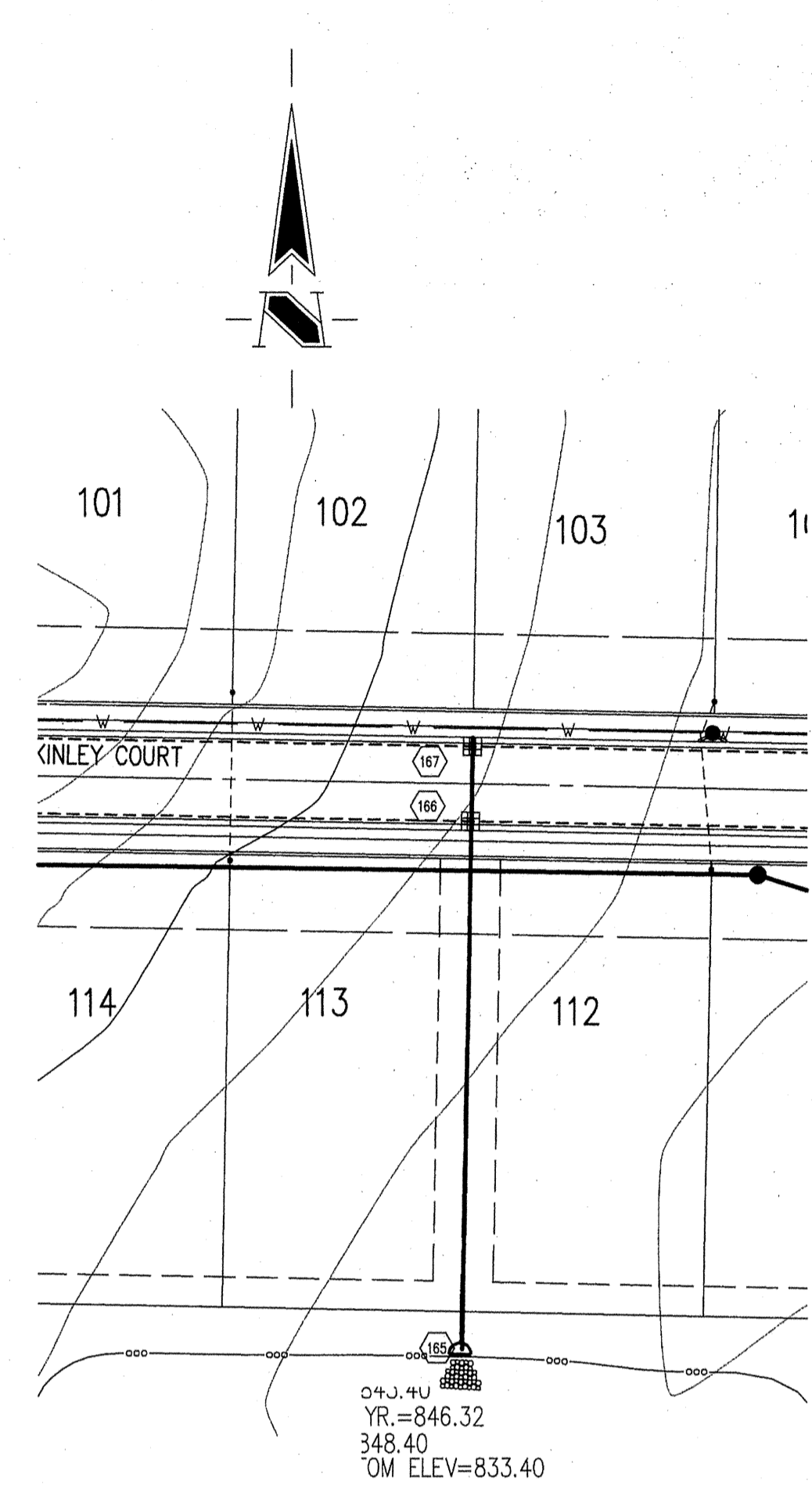
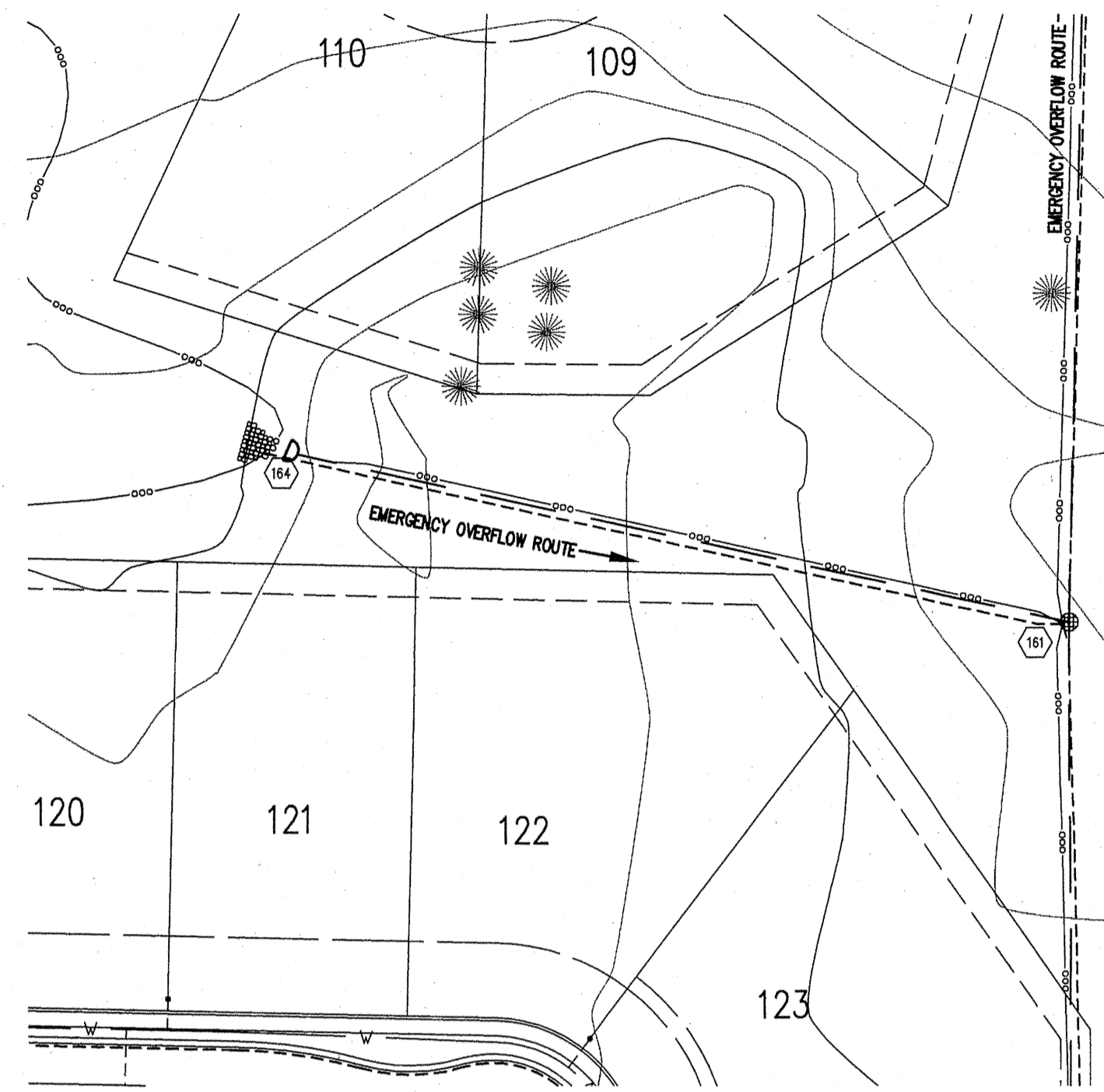
**Bond-LC No:** 2168485  
**Insured For:** Storm Sewers  
**Amount:** \$12,143.40  
**Issue Date:** July 1, 2005

I recommend the Board approve the drain's construction as complete and acceptable.

Sincerely,

Kenton C. Ward, CFM  
Hamilton County Surveyor

KCW/slm



**LEGEND/DETAILS**

Sheet Number	Description
C805-C806	Bedding Detail - Reinforced Concrete Pipe (RCP)
C805-C806	Roll Curb Inlet Detail
C805-C806	Beehive Inlet Detail
C805-C806	Storm Manhole Detail
C805-C806	Precast Concrete End Section
C805-C806	RipRap Detail @ End Section

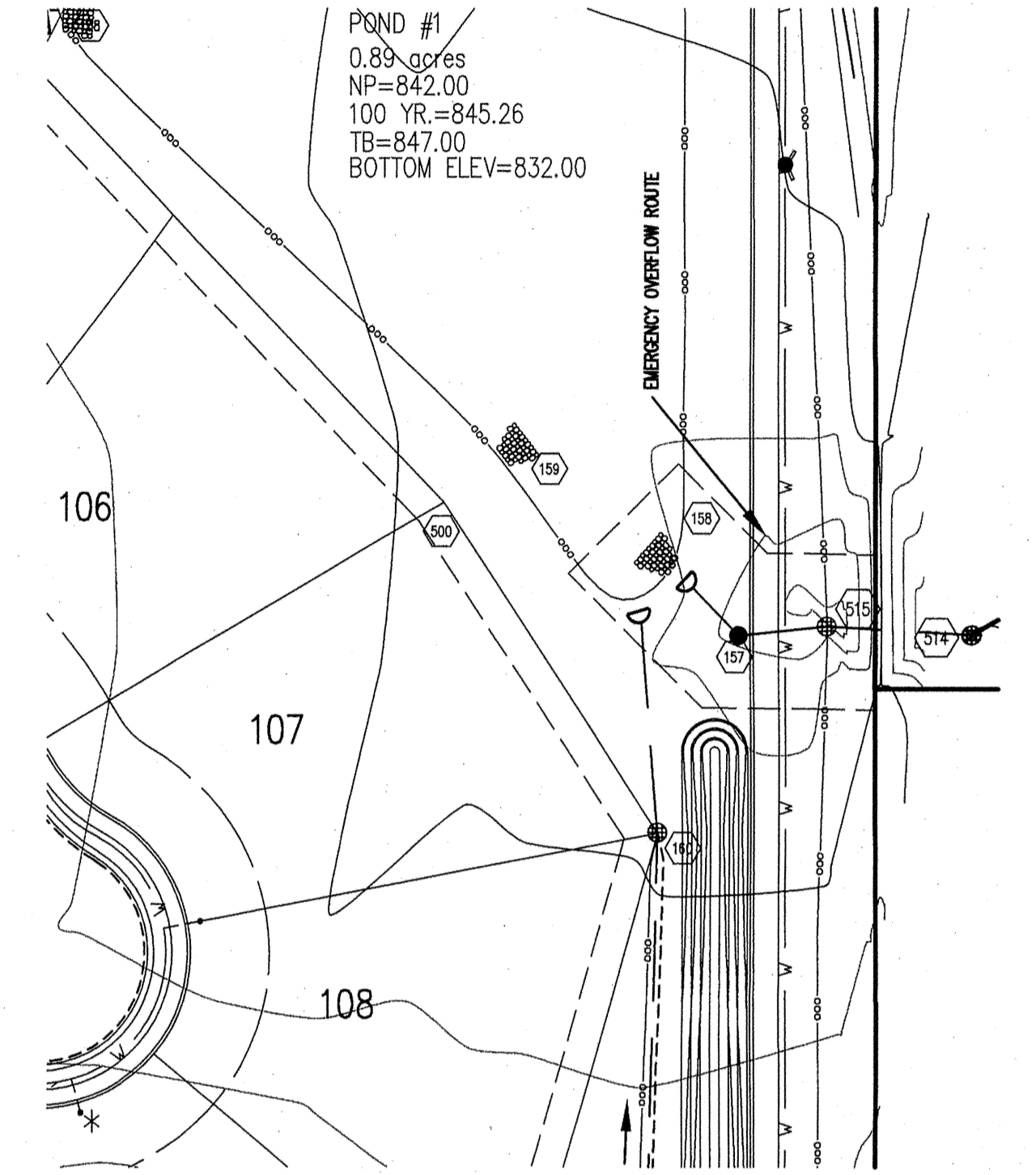
**NOTE**

**HOLEY MOLEY SAYS**  
**"DON'T DIG BLIND"**

**"IT'S THE LAW"**  
 CALL 2 WORKING DAYS BEFORE YOU DIG  
**1-800-382-5544**  
 CALL TOLL FREE  
 PER INDIANA STATE LAW IS-69-1991:  
 IT IS AGAINST THE LAW TO EXCAVATE  
 WITHOUT NOTIFYING THE UNDERGROUND  
 LOCATION SERVICE TWO (2) WORKING  
 DAYS BEFORE COMMENCING WORK.

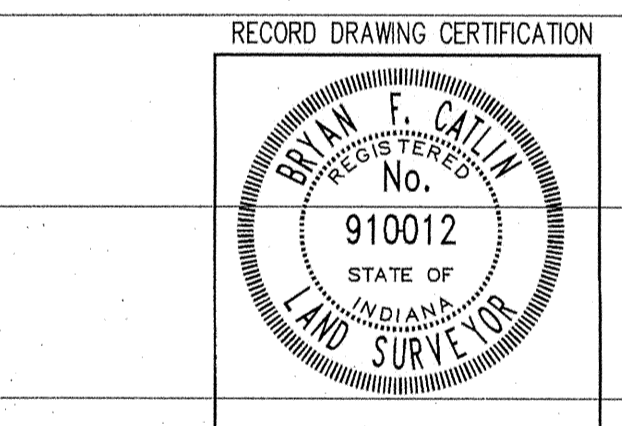
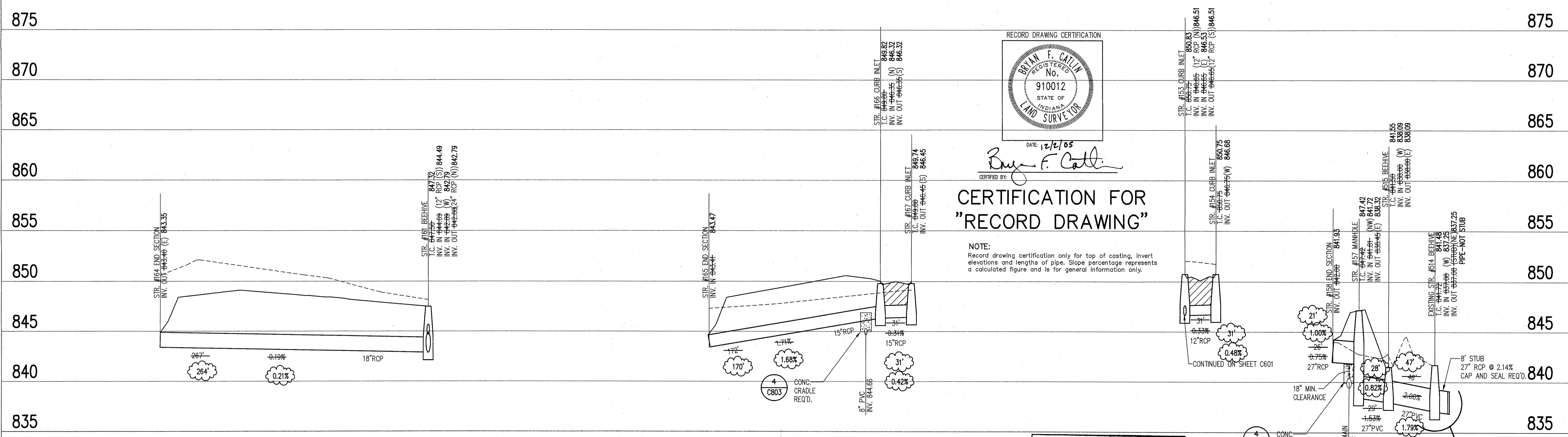
**GENERAL NOTES**

- TEMPORARY TRAFFIC CONTROL DURING CONSTRUCTION TO CONFORM TO APPLICABLE LOCAL AND STATE STANDARDS.
- ALL CONSTRUCTION ACTIVITY ON THIS SITE TO BE PERFORMED IN COMPLIANCE WITH APPLICABLE O.S.H.A. STANDARDS FOR WORKER SAFETY.
- IT SHALL BE THE CONTRACTORS RESPONSIBILITY TO FIELD VERIFY ALL UTILITY LOCATIONS BEFORE CONSTRUCTION BEGINS.
- CONTRACTORS SHALL MINIMIZE DAMAGE TO EXISTING TREES.



**STORM SEWER PLAN**

SCALE: 1"=50'



DATE: 12/2/05  
 CERTIFIED BY: *Bryan F. Catlin*

**CERTIFICATION FOR "RECORD DRAWING"**

**NOTE:**  
 Record drawing certification only for top of casting, invert elevations and lengths of pipe. Slope percentage represents a calculated figure and is for general information only.

This information was gathered for input into the Hamilton County Geographic Information System (GIS). This document is considered an official record of the GIS.  
 Entry Date: 8-22-07  
 Created By: SLM

**STORM SEWER RECORD DRAWING**

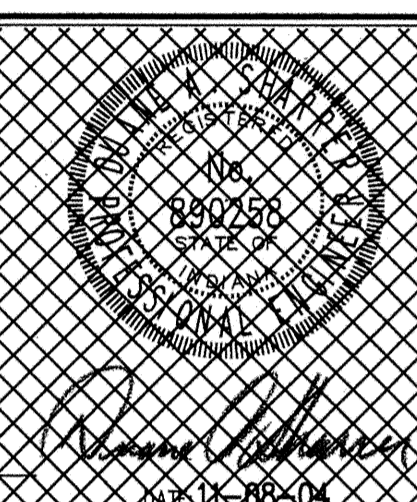
**STORM SEWER PROFILE**

**LEGEND**

	Existing Grade
	New Grade
	Granular Backfill

SCALE: HORIZ.: 1"=50'  
 VERT.: 1"=5'

REVISIONS:  
 1. 12/07/04 -CKK- TAC REVISIONS AND DEVELOPER'S COMMENTS  
 2. 07/19/05 -RAT- REVERSE OUTFALL POND 1 PER COUNTY SURVEYOR'S OFFICE  
 3. 11/22/05 -CKK- STORM SEWER RECORD DRAWINGS



THIS DRAWING AND THE IDEAS, DESIGNS AND CONCEPTS CONTAINED HEREIN ARE THE EXCLUSIVE INTELLECTUAL PROPERTY OF THE SCHNEIDER CORPORATION, AND ARE NOT TO BE USED OR REPRODUCED, IN WHOLE OR IN PART, WITHOUT THE WRITTEN CONSENT OF THE SCHNEIDER CORPORATION.  
 © COPYRIGHTED BY THE SCHNEIDER CORP. (2005)



THE SCHNEIDER CORPORATION  
 Historic Fort Harrison  
 8301 Old Avenue  
 Indianapolis, IN 46216-1037  
 Telephone: 317.826.7100  
 Fax: 317.826.7300  
 www.schneidercorp.com

Architecture  
 Civil Engineering  
 Environmental Engineering  
 Geotechnical Services  
 GIS \* LIS  
 Home Builder Services  
 Interior Design  
 Land Surveying  
 Landscape Architecture  
 Transportation Engineering

**SUMMIT LAKES - SECTION 2**  
 Town of Westfield, Hamilton County  
 E. 169th STREET & GRAY ROAD  
 ARBOR HOMES, LLC  
 6666 E. 75th ST. - SUITE 400 - INDIANAPOLIS, IN 46250

DATE: 11-08-04 PROJECT NO.: 4632.002  
 DRAWN BY: CKK CHECKED BY: DTP  
 SHEET TITLE: STORM SEWER PLAN AND PROFILE  
 DRAWING FILES:  
 R:\44\4632\002\dwg\C601-06.dwg  
 R:\44\4632\001\dwg\18S.dwg  
 R:\44\4632\002\dwg\18S.dwg  
 R:\44\4632\001\dwg\4632001.dwg  
 R:\44\4632\001\dwg\4632001S.dwg  
 R:\44\4632\002\dwg\SANITARY.dwg

SHEET NO.: **C606**